

# THE JUDGES

The Glass Magazine Awards would not be possible without the participation of our judges, who reviewed more than 80 total nominations to determine this year's winners. The 2018 Glass Magazine Awards judges hail from all segments of the industry and offer expertise in everything from design and engineering, to glass and glazing manufacturing and fabrication, to product handling and installation. Glass Magazine would like to extend a thanks to this year's Glass Magazine Award judges for the time and careful attention they dedicated to the selection process.



**Rob Botman**  
general manager, Glassopolis,  
glassopolis.com



**Robert Burkhammer**  
vice president of business relations,  
Giroux Glass, girouxglass.com



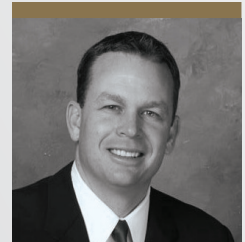
**Jeff Haber**  
managing partner, W&W Glass,  
wwglass.com



**Andrew Haring**  
vice president of marketing, C.R.  
Laurence Co. – U.S. Aluminum,  
crl-arch.com, crlaurence.com



**Brian Harrington**  
principal/director of business  
development, Bellwether  
Design Technologies LLC,  
bellwetherdesigntech.com



**Garret Henson\***  
vice president, sales & marketing,  
Viracon, viracon.com



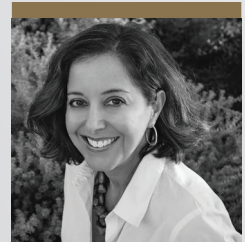
**Jesse Robertson**  
marketing manager, Steel  
Encounters, steelencounters.com



**Diana San Diego**  
vice president of marketing, Safti  
First, safti.com



**Cathie Saroka**  
president and CEO, Goldray Glass,  
goldrayglass.com



**Syndi Sim**  
vice president of marketing and  
business development, Diamon-  
Fusion International, dfsolutions.  
com



**Diego Cuevas**  
vice president of business development, North America, Onyx Solar Group, onyxsolar.com



**Pete de Gorter**  
vice president of DeGorter Inc., degorter.com



**Alice Dickerson**  
founder, managing director, Division 08 Marketing LLC., division08marketing.com



**Glen Greenberg**  
chief technologist/consultant, Elmont Glass, elmontglasswest.com



**Kris Iverson**  
marketing and creative director, Moon Shadow Glass, moonshadowglass.com



**Sabrina Kanaley,**  
architectural representative, Crawford-Tracey Corp., crawfordtracey.com



**Tom O'Malley**  
partner/director of sales, Clover Architectural Products, cloverarchitecturalproducts.com



**Terry Peterson**  
vice president, Novum Structures, novumstructures.com



**John Stephenson**  
senior architect, BRPH Architects and Engineers, brph.com



**Steve Sudeth**  
creative director, Glas-Pro, glas-pro.com



**John Wheaton**  
president, Wheaton Sprague Building Envelope & Affiliates, wheatonsprague.com



**Diana Wolff**  
marketing executive, Key Glass LLC, keyglass.com

\*Henson's votes include input from Viracon's Alissa Schmidt, technical resources manager, and Annette Panning, director, marketing, project management.